

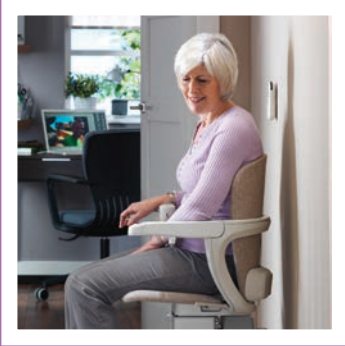
Starla

S T A I R L I F T



CURVED STAIRCASES

Stannah



“600,000 people worldwide have chosen a Stannah stairlift to help them keep their independence”



Stannah. Your first step to freedom

Life is better when you have the energy to do the things you want to do, like enjoying a visit from the grandchildren or entertaining friends. Our experience has taught us that the sooner a stairlift is installed, the sooner you will be able to start appreciating the things you love doing. So, just imagine how a stairlift from Stannah could make your day-to-day life easier, safer and more enjoyable.

The stairlift that's right for you and your home

Stannah know that not all homes are the same. If you think your stairs are unsuitable for a stairlift, we think you might be pleasantly surprised. Our slimline rails and easy-step fold-away chair leaves enough space for others to use the staircase and, contrary to belief, our rails are fitted to the staircase and not the wall. This ensures that when you have your Starla stairlift installed by our friendly and professional engineers, it will be quick, easy and carried out with minimal fuss and bother.

Stannah, a company trusted for over 150 years

We are a family-run company and have been for five generations. The current managing directors are the great, great grandchildren of Joseph Stannah, who started the company in the 1860s. His engineering principles and strong family values run as true today as they always have.



Sleek and smooth

Safely seated with the easy-to-use seatbelt on, a gentle touch of the controls is all it takes to climb your stairs.



Neat, elegant and tidy

Our elegant curved rail and fold-flat chair design leaves your hallway looking spacious and tidy with plenty of space for other stair-users.

Starla. Exclusively for you

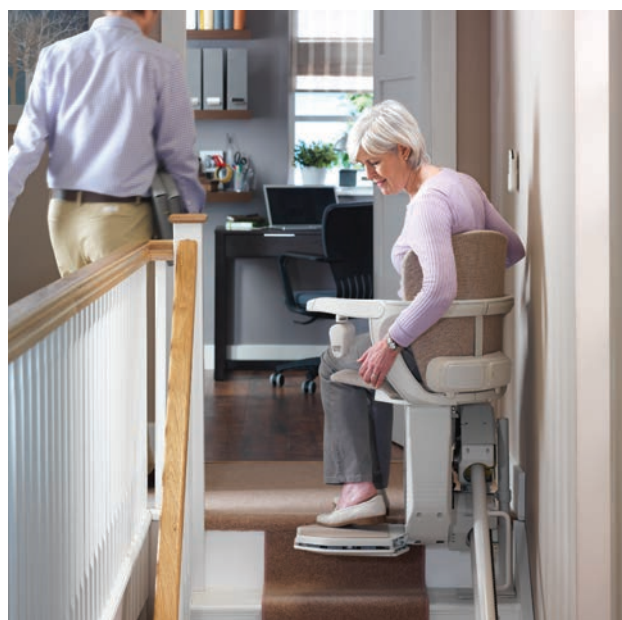
Stannah understand that every curved staircase is different from the next, with its own landings, angles and corners. So we custom-design the curved rail on your Starla, making it to measure so it fits your stairs precisely. Together with your chosen colours on the chair and rail, it all adds up to your perfect stairlift.

Stylish and space-saving

The ultimate in stairlift flexibility - that's our Starla stairlift. Choose an elegant, all-vinyl or all-fabric chair or add a contemporary dark or light wood trim - it's up to you. Settle into the comfortable and supportive seat, put on your easy-to-use seatbelt, then simply nudge the slimline controls to gently move up or down your stairs. It has a easy-step foldaway function that folds the chair neatly for extra space, along with a seat-load sensor that stops it from moving until you're seated. You can even lock your Starla with the removable key to keep it safe from children. For those who have limited strength in their hands, you can also choose an optional one or two-way powered swivel seat which is designed for narrow hallways, that turns to face your landing or hall, making getting in and out of your Starla easy.

Rails that follow every twist and turn

Your made-to-measure curved rail neatly hugs every corner of your stairs, while its elegant design harmonises with any home. The slimline profile of the rail also leaves space on your stairs for others to safely use them, while its twin-tube design makes it exceptionally strong and stable. The rail is fixed to your stairs rather than the walls. The rail fits to either side of the staircase, depending on space.

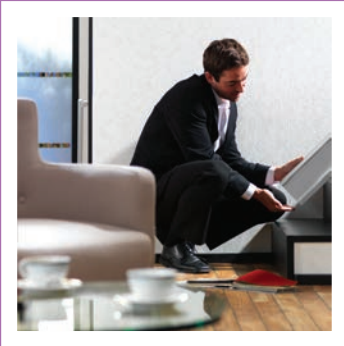


Naturally follows every curve

The bespoke Starla rail can be fitted to either side of the staircase - if space allows.

Simple and safe to get on and off

The one-way manual or optional one or two-way powered swivel seat allows you to get on and off your Starla safely and easily.



“The sales advisor was extremely thorough when he measured my staircase”





“The controls are very easy to use and can be operated with just a light touch”



Starla. Making your life easier

At Stannah, we make your well-being our utmost priority. This is why the Starla is designed to give you total reassurance with a host of thoughtful and intuitive features making it exceptionally safe and secure.

Below are the benefits and features common to the Stannah Starla for curved stairs.

1. Comfortable and safe

The generously upholstered, padded seat and supportive high back offer total comfort, while the slightly upwardly angled seat gives added security.

2. Easy-to-use controls

To operate your Starla, gently move the controls in the direction you wish to travel.

3. Seatbelt options

The retractable seatbelt as highlighted opposite, can be fastened simply with one hand. A range of other seatbelt designs are available.

4. Easy-to-use swivel levers

Use the standard easy-to-operate manual swivel lever, or for those with limited strength in their hands, the optional one or two-way powered swivel, to get off your stairlift in the safest position at the top or bottom of your stairs.

5. Folding options (Manual)

Simply fold the arms, then the seat, the footrest is folded using a separate lever. Or choose the optional powered footrest, see point 8.

6. Arm isolation

This safety system prevents your Starla from moving until the armrest nearest the bottom of the staircase is fully lowered.

7. On-off switch

Clear easy-to-use on and off button.

8. Powered footrest (Optional)

Our powered footrest folds or unfolds independently, ideal for you to enter or exit the chair with the footrest out of the way.

9. Plain or wood trimmed upholstery

Choose an all-fabric or all-vinyl chair or add a dark or light wood trim.

10. Seat load sensor

A seat load sensor stops your Starla from moving until you are safely seated.

11. Safety edges

Safety sensors around the footrest and carriage automatically detect any obstruction on your stairs, bringing your Starla to a safe and gentle stop.

Model shown opposite is the Starla for curved stairs in Stone Woven Upholstery

Starla. Your step-by-step guide

We believe a stairlift should go beyond the functional. To us, that means making it beautifully simple to operate.



1. When it's not in use, your Starla gives you more space on your stairs for other users.



2. Once you have unfolded your Starla, make yourself comfortable in the seat.



3. A gentle movement of the controls is all it takes to make your Starla glide effortlessly upstairs or downstairs.



4. When you arrive at the top of the stairs, you can swivel your Starla around so you can get off safely.



5. When not in use your Starla can be left in the swivelled position as a safety barrier, or fold it flat against the wall.

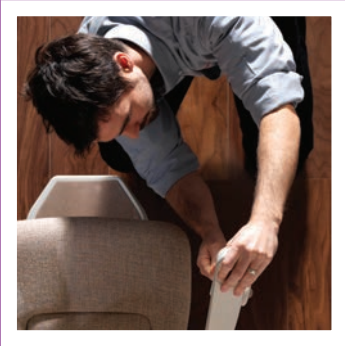


6. Using the wall-mounted remote control, you can send and receive your Starla to either end of the stairs.



“My seatbelt gives me additional peace-of-mind when I’m using my stairlift”





“I was pleased that the armrests on the chair could be adjusted to suit me for extra comfort”

Starla. Created with you in mind

No two people are ever identical, that’s why as well as our standard features we also have a number of optional features which can be tailored to you.



Retractable seat belt

The seatbelt has been designed to be fastened with one hand.



Safety edges

Your Starla will automatically stop if it meets an obstruction on your stairs.



Tailor-made for just your stairs

Your Starla curved rail is custom made for just your stairs, so it fits perfectly.



Footrest fold button (Optional)

The one-touch, footrest-fold button helps you to raise or lower the footrest.



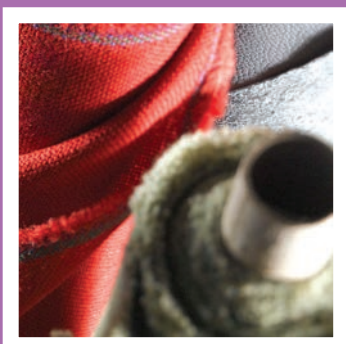
Remote wall controls

Your Starla can be called to either end of your stairs by using the wall control.



Horizontal finish

If space allows, your rail can be extended around onto your landing.

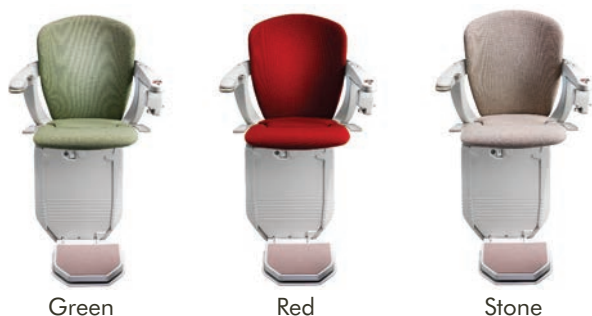


“It was important for me to find a stairlift that blended in perfectly with my home”

Starla. Countless colour combinations

We offer the Starla in a choice of two wood finishes, two upholstery textures and six complementary rail colours to match your tastes and home décor.

Woven Fully Upholstered



Green

Red

Stone

Vinyl Fully Upholstered



Brown

Light Beige

Rail Colours

Standard Finish



Pearl

Optional Finishes



Window Grey



Jet Black



Nut Brown

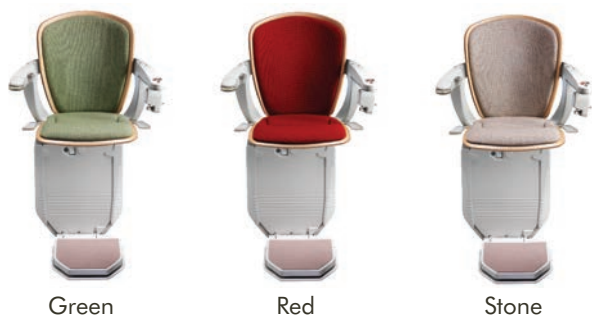


Ochre Brown



Beige

Woven : Light Wood Trim



Green

Red

Stone

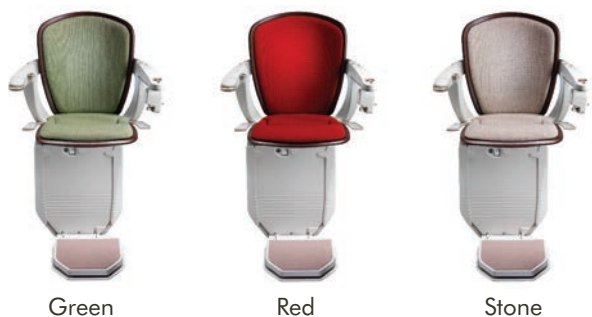
Vinyl : Light Wood Trim



Brown

Light Beige

Woven : Dark Wood Trim



Green

Red

Stone

Vinyl : Dark Wood Trim



Brown

Light Beige



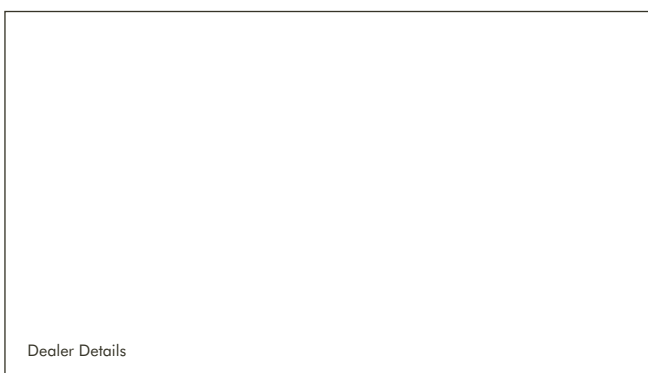
“How nice it was to find a company more interested in what’s best for me and not just best for them”

Starla. One simple call is all it takes.

Contact your local Stannah Advisor, who will arrange to visit your home for a friendly free consultation. They will listen to your needs, answer your questions and provide a full, no-obligation quotation. If you decide to go ahead, we will measure your staircase using the latest technology to style your stairlift.

Stannah promise to provide:

- **Your rail, custom-made to fit your stairs**
- **Your Starla stairlift, tailored to your requirements**
- **Quick and clean installation**
- **Expert support, close at hand**
- **Comprehensive peace-of-mind guarantee**



Dealer Details

Stannah

Stannah Stairlifts, Watt Close, East Portway,
Andover, Hampshire, SP10 3SD, United Kingdom

www.stannah.com



OUR COMPANY POLICY IS ONE OF CONTINUING PRODUCT IMPROVEMENT. WE THEREFORE RESERVE THE RIGHT TO ALTER THE SPECIFICATIONS AND TO CHANGE AND IMPROVE DESIGN AT ANY TIME. FULL OPERATING INSTRUCTIONS ARE SUPPLIED FOR ALL PRODUCTS. STANNAH IS A REGISTERED TRADEMARK. THE CE MARK INDICATES THAT THIS PRODUCT COMPLIES WITH THE APPLICABLE EUROPEAN DIRECTIVES WHICH RELATE TO HEALTH, SAFETY, ENVIRONMENT AND CONSUMER PROTECTION. DESIGN, MANUFACTURE AND INSTALLATION: STANNAH STAIRLIFTS LTD HAS BEEN ACCREDITED TO ISO9001:2008 SINCE 2009, THIS IS FOR DESIGN, DEVELOPMENT, PRODUCTION AND DISTRIBUTION OF STAIRLIFTS. ALTERATIONS IN MODELS, STANDARD AND OPTIONAL EQUIPMENT AS DESCRIBED IN THE TEXT AND ILLUSTRATIONS, MAY OCCUR. FOR PRECISE INFORMATION PLEASE CONTACT YOUR STANNAH DEALER.